



**APS**

***APS PV Simulator  
Technical Specifications***

## Product Overview

APS PV simulator is a DC power supply featuring high precision, high dynamics and high-speed switching. With the complete I-V curve simulation function, it can simulate the output characteristics of various PV panels, and provide various kinds of user-defined curves, static and dynamic I-V curves and shadow occlusion simulations. The programming function can simulate different waveform outputs through three programming modes like Step, List and Wave, in order to fulfill the test requirements of various industries.

The power supply can not only provide standard power supply environment for electrical equipment, but also receive the energy from load and feed it back to the grid, with feedback efficiency of above 94%, to save energy and improve the test environment.



## Product Series

Model	Power (kW)	Output Voltage (V)	Output Current (A)	Size (mm) Width x Height x Depth	Weight (kg)
APS-30-1206	±300	12~1200	±600A	1610×1955×1200	2030
APS-40-1208	±400	12~1200	±800A	2010×1955×1200	2470
APS-50-1210	±500	12~1200	±1000A	2010×1955×1200	2850
APS-60-1212	±600	12~1200	±1200A	2410×1955×1200	3500
APS-75-1215	±750	12~1200	±1500A	3410×1955×1200	4530
APS-100-1220	±1000	12~1200	±2000A	3410×1955×1200	4960
APS-30-2004	±300	20~2000	±400A	1610×1955×1200	1900
APS-40-2006	±400	20~2000	±600A	1610×1955×1200	2430
APS-50-2007	±500	20~2000	±700A	2010×1955×1200	2670
APS-60-2008	±600	20~2000	±800A	3410×1955×1200	3500
APS-75-2010	±750	20~2000	±1000A	3410×1955×1200	4390
APS-100-2014	±1000	20~2000	±1400A	3410×1955×1200	4940

# Product Advantages

## Complete I-V Curve Simulation

Built-in Sandia, EN50530, CGC/GF004 standard curve for static and dynamic MPPT testing. Moreover, user-defined curve simulation is supported with one click call. It has curve programming function, and can import multiple curves in a user-defined way in sequence automatically. It has shadow occlusion simulation function, and can simulate the real scenarios like the photovoltaic panels occluded by cloud or dirt.

I-V curves can be simulated by both parameters such as  $V_{oc}$ ,  $I_{sc}$ , and fill factor and .CSV files import. The characteristics of monocrystalline, polycrystalline, amorphous, and other solar cells can be simulated. The number of simulation points is more than 4000, which enables accurate simulation of the static characteristics of I-V curves.



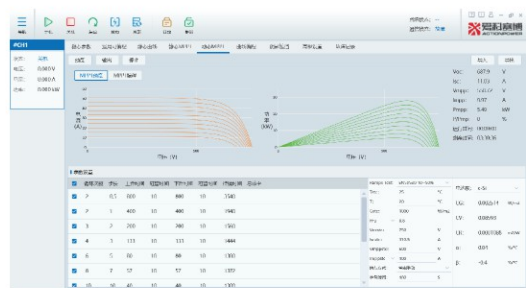
Static Curve-Sandia Interface



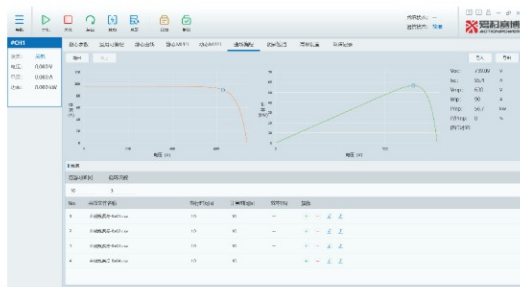
Static Curve-EN50530 Interface



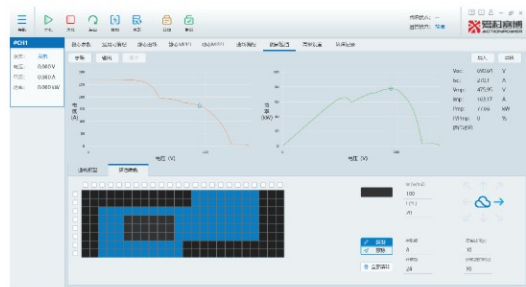
Static MPPT interface



Dynamic MPPT interface



Curve Programming Interface

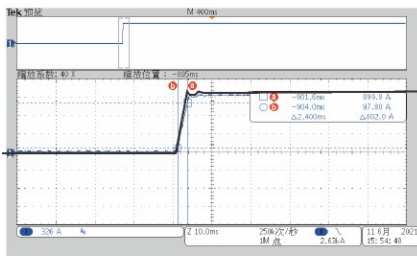


Shadow Barrier Interface

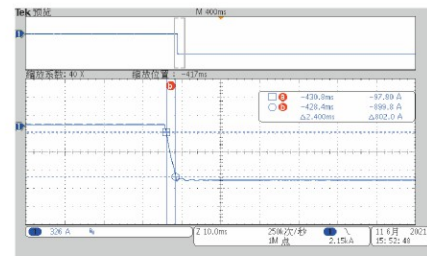
## Product Advantages

### High Dynamics

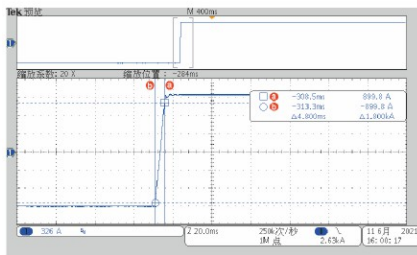
The rise/drop time at 10%~90% load is less than 2.5ms, and the switching time at +90%~-90% load is less than 5ms. The voltage slew rate can reach 200V/ms.



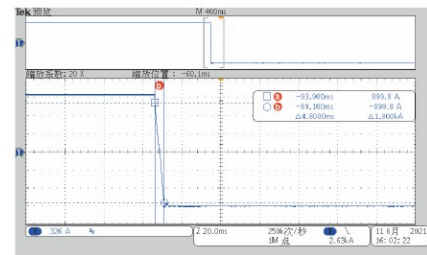
Rise time at 10%~90% current is 2.4ms



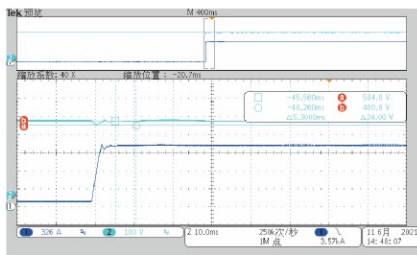
Drop time at 90%~10% current is 2.4ms.



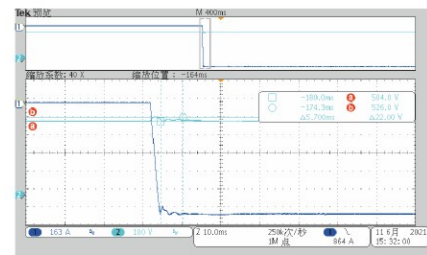
Switching time at -90%~+90% current is 4.8ms.



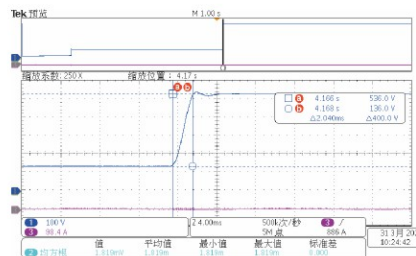
Switching time at +90%~-90% current is 4.8ms.



500V transient loading voltage fluctuation is 24V



500V transient unloading voltage fluctuation is 22V



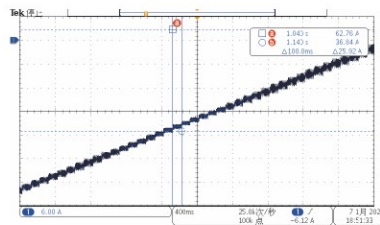
Voltage slew rate: 200V/ms: 136V~536V, change time: 2.04ms



## Product Advantages

### Quick Switching

Two groups of I-V curves can be switched quickly (in 100ms) with the optimized communication transmission mode, to accurately simulate the rapid change characteristics tracking of dynamic MPPT.



Curve switching

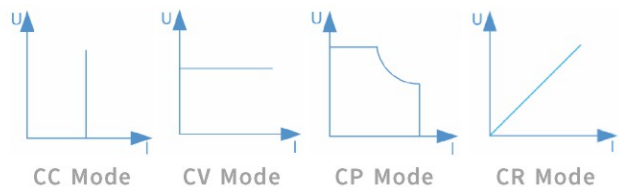
## Product Function

### Multiple Output Modes

The power supply provides four output modes: CC constant current mode, CV constant voltage mode, CP constant power mode and CR constant resistance mode.



Stable-state Parameter Setting Interface



CC Mode

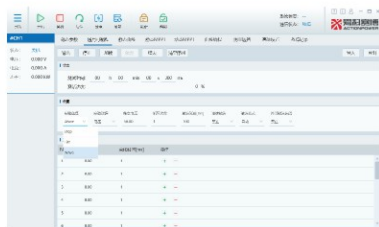
CV Mode

CP Mode

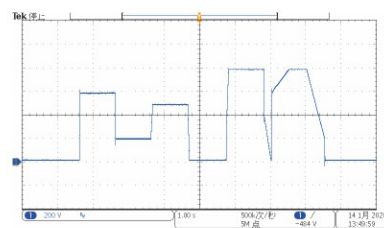
CR Mode

### Universal Programmable Function

It supports up to 200 programming steps, and the whole program can be repeated for 999 times. The output voltage, current, and power can be programmed and output according to the customer's requirements. The advanced output modes can be combined by Step, List, Wave, programming steps, variation time, cycle times etc., to meet the test requirements under complex conditions, and can be used for programming tests of various parameters such as voltage, current and power. Programming data has memory function and supports import and export.



Universal Programmable Interface



Programming Waveform Example

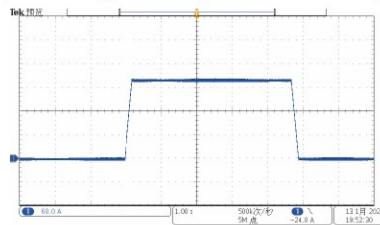
## Product Function

### Wide-voltage output

The max output voltage of traditional power supplies is equal to the nominal voltage, while the max output voltage of the power supply from Actionpower far exceeds the nominal voltage. The output mode keeps constant power (CP) while the output voltage of the power supply is higher than the nominal voltage, therefore maximizing the output capacity of the power supply.

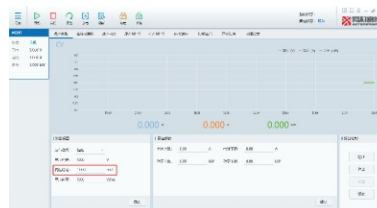
### Output Slow Start Function

The rising/dropping slope of the power supply's output voltage/current/power can be adjusted to control the speed of power supply output rise or fall, reducing the surge impact of the power supply on the test object.



### Internal Resistance Function

The power supply can set the internal resistance for testing in special circumstances, such as compensating for the voltage drop caused by longer connecting cables, ensuring that the load can obtain the desired voltage value.



Internal Resistance Setting Interface

### Complete Protection Mechanisms

The power supply features multiple protection mechanisms, including OC, OV, OP, and OT protection functions. The values for output protection can be configured to ensure the safety of both the power supply and the load. The fault function enables complete recording of the fault information of the power supply, with up to 200 of recorded information, and provides the fault inquiry instructions to facilitate secondary integration of tracking and maintenance functions for power supply faults.

### Parallel Function

Multiple power supplies of the same model can be installed in parallel, and high-speed fiber optic communication technology is adopted to ensure high interference resistance and no delay. The highest output power of ABS in parallel can reach to 8MW. Moreover, the technical standards are equivalent to those of single unit, and to provide users test scenario reconstruction with multi-station, multi-capacity and multi-voltage class, and greatly improve test efficiency for customers.

## Technical Specification

Indicators		Technical parameters
Category		
<b>Basic Parameters</b>		
Output mode		CV, CC, CP, programming and PV standard (EN50530(Sandia) dynamic & static MPPT trackingPV array
Energy feedback		Receive load energy and feed it back to the grid
Isolation function		Electrical isolation of input and output
Parallel function		Multiple sets of the same model can be connected in parallel
<b>DC output</b>		
Voltage	Resolution (V)	0.01
	Accuracy	±0.1% F.S.
	Effective ripple value	0.1% F.S (resistive load)
	Voltage slew rate	200V/ms
Current	Resolution(A)	0.01
	Accuracy	±0.1% F.S.
	Effective ripple value	0.2% F.S. (resistive load)
	Rise time	2.5 ms (10%-90% rated current)
	Switching time	5ms (switching from -90% to +90%)
I-V Curve	Open-circuit voltage setting	12~1200V
		20~2000V
	Short-circuit current setting range	1A~1e
	Simulation fill factor range	0.3~0.95
	Photovoltaic panel type	c-si, Thin-film, user-defined
	I-V curve update rate	100ms with online curve switching function
	I-V curve editing	EN 50530, Sandia, and simple with user-defined curves; static MPPT curves; dynamic MPPT curves; shadow barrier; curve programming
	Number of points on a single curve	4096 points
Curve setting	1) IV curves can be user-defined using parameters such as Voc, Isc, FF and Pm;	
	2) The I-V curve database is provided, with the number of curves ≥ 100;	
	3) IV curves in different situations can be continuously output in the dynamic operating mode with the environmental impacts such as temperature change and irradiance	
	4) The dynamic I-V curve test program under EN50530 is built-in;	

## Technical Specification

Indicators		Technical parameters
Category		
Universal programmable	Programming steps	200 steps
	Programming parameters	Voltage/current, rise time, hold time, trigger pulse output
	Rise time range	1ms-99999s
	Flat time range	1ms-99999s
	Minimum programming timestep	1ms
	Editing mode	Add, delete, import, export
	Operation mode	Run, stop, loop
	Trigger mode	Automatic, manual, external
<b>Measurement</b>		
Voltage accuracy	±0.1% F.S.	
Voltage resolution (V)	0.001	
Current accuracy	±0.1% F.S.	
Current resolution (A)	0.001	
Power accuracy	±0.2% F.S.	
Power resolution (kW)	0.001	
<b>AC input</b>		
Wiring mode	Three-phase four-wire ABC+PE	
Frequency (Hz)	47 - 63	
Voltage range (V)	380V±15%	
Power factor	0.99 @ full load	
Efficiency	Models of 300kW and above: > 94%, others: > 90%	
Harmonic current	≤3%	
<b>Other Parameters</b>		
Protection function	OVP, OCP, OPP, OTP, Phase loss protection	
Communication interface	Standard configuration: LAN; optional: RS485, CAN	
External interlocking	External interlocking input is normally on/off; external interlocking output is normally on/off.	
Trigger signal	Trigger input/output	
Control and display	Local touchscreen control and remote computer control; display voltage, current, power and operation trend chart	
Insulation and withstanding voltage	10MΩ/DC500V; 3600VAC(5000VDC)/1min	
Cooling mode	Fan cooling	
Operating temperature	-10°C~40°C	
Relative humidity	10% to 90% RAH	
Altitude	≤2000m	



The product of Chinese wisdom  
Go to the world arena

**ACTIONPOWER Xi'an**

Address (Xi'an): No. 12, Xinxu Ave., Hi-tech Industries Development Zone,  
Xi'an City, Shaanxi Province  
Sales hotline: 029-88887953  
Sales email: [sales@cnaaction.com](mailto:sales@cnaaction.com)  
Company switchboard: 029-85691870、85691871、85691872  
Fax: 029-85692080  
Website: [www.cnaaction.com](http://www.cnaaction.com)

**ACTIONPOWER Suzhou**

Address (Suzhou): No. 590, Songhuajiang Road, Hi-tech Industries Development Zone,  
Suzhou City, Jiangsu Province  
Tel: 0512-66806197 transfer 8060、8061、8062  
Fax: 0512-66806198

All rights reserved No notice of any change



**ACTIONPOWER**  
Wechat Official Account

2023.09